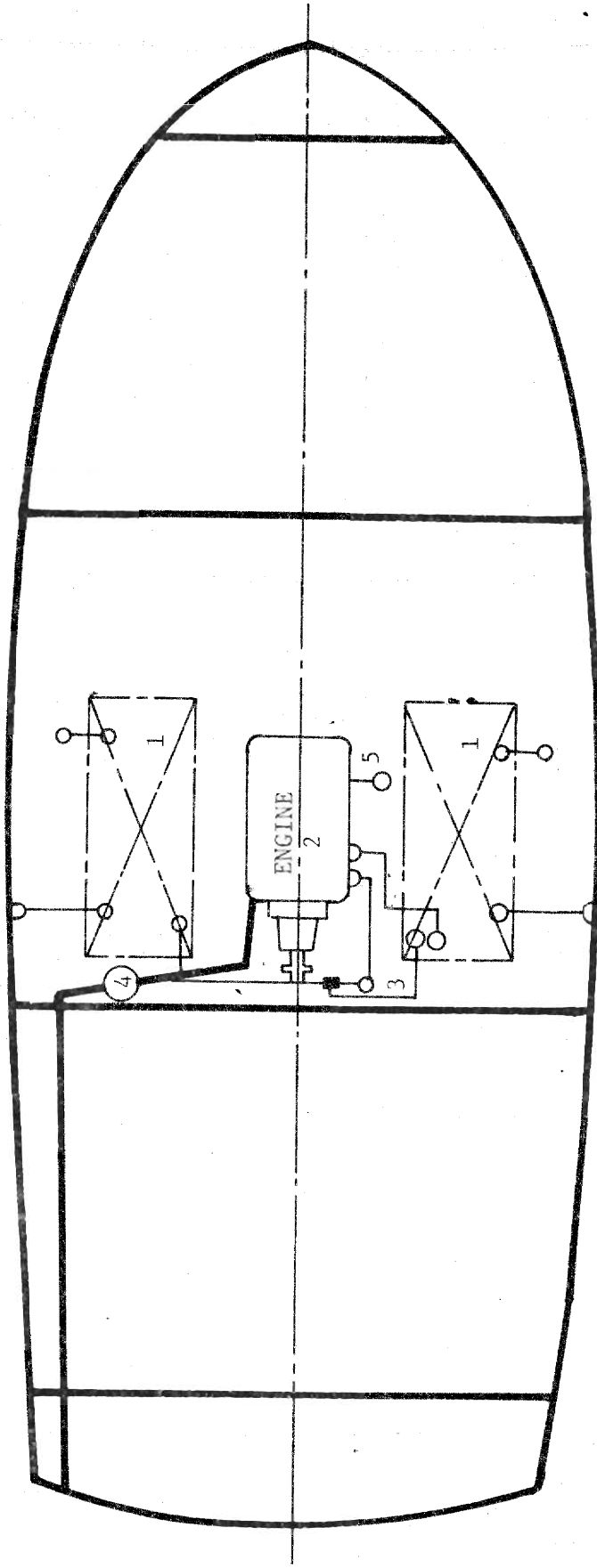


- 1. Water tank.
(2 x 110 = 220Gals)
- 2. Water pressure pump.
- 3. Electric water heater.
- 4. Wash basin.
- 5. Galley sink.
- 6. Hand galley pump.
- 7. Manual toilet with china bowl.
- 8. Shower head.
- 9. Bilge pump.
- 10. Hand bilge pump.
- 11. Holding tank. (optional)
- 12. Shower sump pump.

○ Seacock
 ■ Tee fitting.

WATER PIPING SCHEMATIC DRAWING
FOR ALBIN-36 DOUBLE CABIN TRAWLER

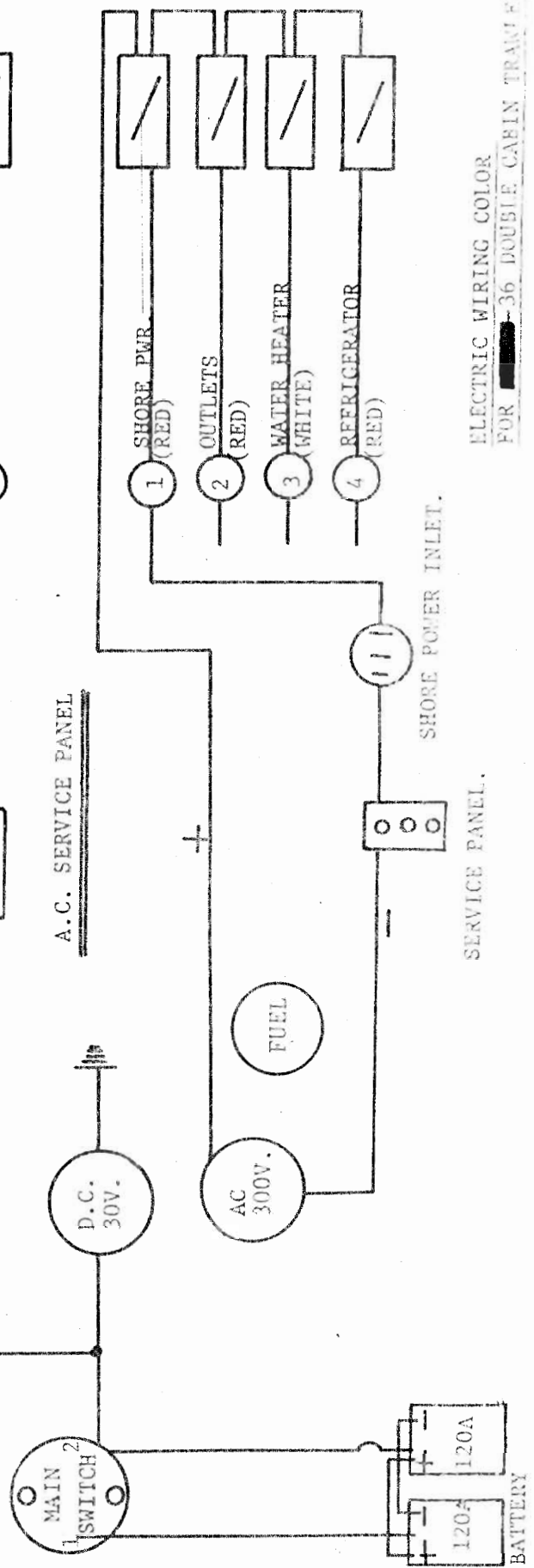
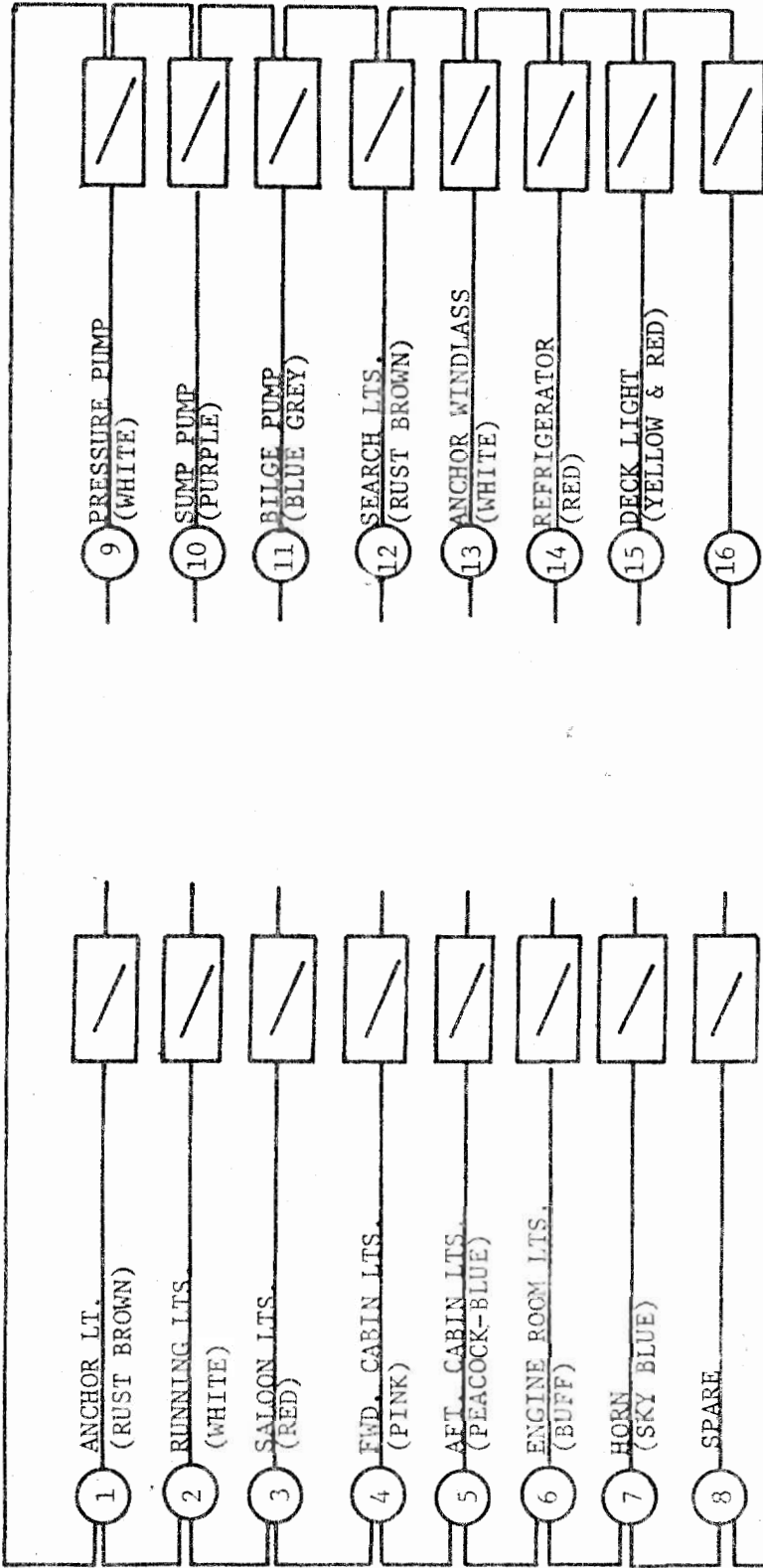


- 1. Fuel tank 175 Gals.
- 2. Ford diesel engine 120HP.
- 3. Primary filter.
- 4. Muffler.
- 5. Sea-water strainer.

- Seacock.
- ⊕ Tee fitting.

FUEL PIPING SCHEMATIC DRAWING
FOR ALBIN-36 DOUBLE CABIN TRAWLER

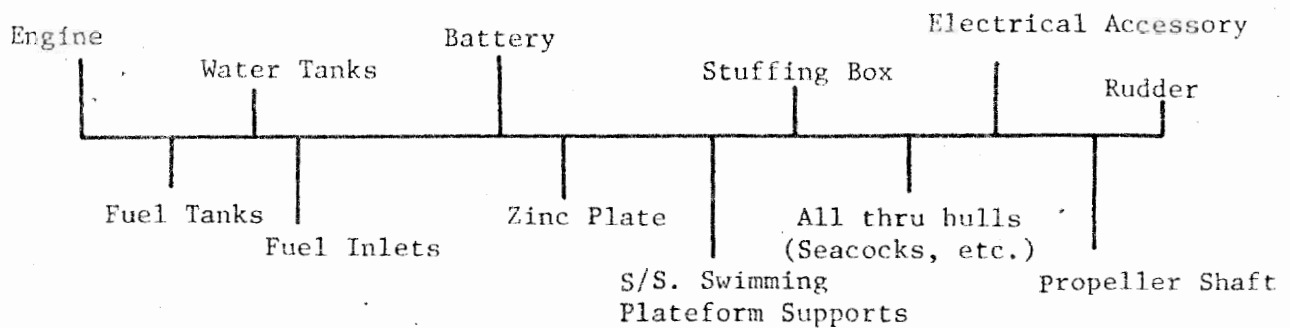
D. C. SERVICE PANEL



ELECTRIC WIRING COLOR FOR 36 DOUBLE CABIN TRAWLER

ELECTRIC WIRING COLOR

ITEM	WIRING COLOR	WIRE NO.	LOCATION
Fwd. cabin lt.	Pink, Black	#12	Toilet dome lt.(1) Berth lt.(2)
Salon lt.	Red, Black	#12	Dome lt. (4)
Aft. cabin lt.	Peacock blue, Black	#12 #12	Dome lt.: Above chart table (1), Above vanity table (1), toilet (1). Berth lts. (2).
Eng. Room lt.	Buff, Black	#12	Dome lt.(2) fwd. & aft.
Running lt.	White, Black	#12	Side lt. left red & right green.
Bow lt.	White, Black	#12	White 20 pts.
Stern lt.	White, Black	#12	White 12 pts.
Anchor lt.	Black, Rust brown	#12	Mast lt.
Horn	Sky blue, black	#12	In front of salon cabin
Wiper	Purple, black	#12	Front starboard window.
Blower	Beige, black	#12	In engine room (2)
Sump pump	Blue gray, Black	#12	FRP sump box in bilge.
Bilge pump	Blue gray, black	#12	In bilge area of engine room.
Pressure pump	White, black	#12	Front of engine room.
Search lt.	Rust brown, black	#12	Wiring at flying bridge front
Windlass	beige, black	#12	Wiring at bow sampson post.
AC outlets	Jade green, Red, Black	#10	Fwd. cabin (3), salon (1), galley (1), engine room (1), aft. cabin(3).
Power inlet	Jade green, Red, Black	# 8	Starboard cabin side.
AC water heater	White, Black, Jade green	#10	In the front of engine room



BONDING SYSTEM

FOR ██████-36 DOUBLE CABIN TRAWLER

LENGTH	O.	A.	35'-3"
LENGTH	W.	L.	31'-3"
BEAM			13'-1 ³ / ₄ "
DRAFT			3'-6"

