

Bijou Listing

PRICE REDUCED

41' Island Packet PY Cruiser

Beautiful unique twin cockpit trawler

CE Category A – Ocean rated

Single 110 hp Yanmar (950 hours)

Bow thruster

8kw MasPower Genset (715 hrs)

Self-righting capability – fully ballasted hull

One piece, hand laminated, solid fiberglass hull and prop protecting keel

Climate controlled enclosed wheelhouse with a panoramic view

Bottom job, 5/15

New Sitex AIS transponder 6/15

New Garmin 1040xs plotter 12/14

New Garmin HD radar 12/14

4 new Lifeline 125ah house batteries 6/15

New West Marine 31 AGM start battery 7/15

Black window covers

Low air draft gets under almost all the bridges

Full walk around decks make it easy to handle in the locks and docks

Additional Specs, Equipment and Information:

Boat Name

BIJOU

Specs

Builder: ISLAND PACKET

Designer: BOB JOHNSON

Hull Shape: Semi-Displacement

Dimensions

LOA: 41 ft 1 in

Beam: 12 ft 9 in

LWL: 34 ft 9 in

Maximum Draft: 3 ft 8 in

Displacement: 23000 lbs Dry Load

Ballast: 5000 lbs

Headroom: 6 ft 6 in

Engines

Total Power: 110 HP

Engine 1:

Engine Brand: Yanmar

Year Built: 2008

Engine Model: 4JH4-HTE

Engine Type: Inboard

Engine/Fuel Type: Diesel

Engine Hours: 871

Propeller: 3 blade propeller

Drive Type: Direct Drive

Engine Power: 110 HP

Cruising Speed: 7 knots

Maximum Speed: 8 knots

Tanks

Fresh Water Tanks: Plastic (130 Gallons)

Fuel Tanks: Aluminum (215 Gallons)

Holding Tanks: Plastic (50 Gallons)

Accommodations

Number of single berths: 2

Number of double berths: 1

Number of heads: 1

DETAILED INFORMATION

Link to Island Packet PY Cruiser brochure -

<http://www.boatvertizer.com/docs/catalog/6445/islandpacketpycruiser.pdf>

Link to Power and Motor yacht PY Cruiser Boat Test

-<http://www.powerandmotoryacht.com/boat-tests/island-packet-py-41>

WHEELHOUSE

- Panoramic view through 8 large windows 4 of which open
- Lewmar hatch w/OceanAir screen/shade
- Zwaardvis helm seats
- UltraLeather upholstery
- L-Shaped settee with folding leaf table
- Varnished hardwood sole
- Comfortable seating for 6
- Helm station – Edson destroyer-type wheel w/brake, Engine monitoring, Garmin chart plotter/radar screen, windlass control, Raymarine autopilot, ICom VHF, Bow thruster control, Single lever engine control, Compass

GALLEY

- Port side is twin 12v Frigaboard Refrigerator/Freezer compartments with separate digital controls and individual keel cooled compressors
- Tappan Microwave
- Two Burner Force 10 propane stove with oven (gimbaled)
- LPG deck storage bin for two 10 lb tanks
- Dual Stainless Steel sinks with retractable spray nozzle
- Hot and cold pressure water
- Fresh water hand pump
- 6 gallon water heater
- Abundant storage throughout the galley area
- Non-skid sole

ELECTRONICS

- Garmin GPS map 1040xs Chart plotter (new 12/14)
- Garmin HD Radar (new 12/14)
- Sitex AIS transponder (new 6/15)
- Raymarine 6002 Auto Pilot
- Raymarine Smart Controller Auto Pilot wireless remote 11/14
- ICOM Command Mic at helm
- ICOM M422 VHF at electric panel
- Raymarine ST 60 Speed
- Raymarine ST 60 Depth

- Fusion AM/FM/CD Stereo system with Sirius Radio
- New Balmar MC 614 regulator with AGM battery settings
- New Lifeline (4) AGM 125 AH house batteries 6/15

OWNER STATEROOM

- Queen sized island berth
- Berber-style beige marine carpet on sole
- Two hanging lockers and two bureaus plus storage under berth
- Three opening ports and a large Lewmar hatch with OceanAir screen and shade
- Polaroid TV & Craig DVD/CD player attached to articulating arm
- Private entrance to head
- Full length dressing mirror
- Digital climate control
- Overhead lighting plus reading lights

GUEST STATEROOM

- Twin Berths
- TV attached to articulating arm
- Privacy door
- Hanging locker with removable shelves
- Storage under outboard berth
- Two opening ports
- Beige marine carpet
- Engine/machinery access hatch under inboard berth

HEAD

- Dual access enabling the owners a private access to the head
- Separate shower stall with molded seat and s/s rod for hanging wet items
- Ample storage cabinets are located below the sink
- An opening port adds to the ventilation and light in this area
- A large mirror and covered GFI plug above the molded-in sink
- Tile patterned molded slip-resistant sole

CHART TABLE

- Located to port opposite galley
- Storage for charts and misc. item under desk top and tall item in cabinet
- 110v outlet

MECHANICAL AND ELECTRICAL

- Engine Brand: Yanmar 4JH4-HTE 110 HP Fresh water cooled 871 Hrs.
- MasPower MP8M 8kW generator with sound shield. 683 hrs. on 3 cyl Yanmar diesel
- New generator raw water pump 6/16
- Two MarineAir Air conditioner units with digital controls
- 6HP SidePower Bow thruster with joystick control
- 6 gal water heater
- Fireboy system
- 4 new Lifeline GP:=31XT 125ah house batteries 6/15
- New West Marine 31 AGM start battery 7/15
- New Balmar Smartguage battery monitor 7/15
- 60-amp Charles Industries 5000 Series battery charger

- Racor 50 fuel/water separator
- Groco sea strainer
- Perko battery disconnect switches for Engine, generator, and house batteries

COCKPIT & DECK

- New 55 lb Rocna anchor 6/15
- Muir Atlantic 1000 anchor windlass: reversible electric with deck & cockpit controls
- Large chain locker
- Wide side decks with cabin top handrail
- Mooring cleats, spring line cleats, chocks, flush mount chafe guards
- Cockpit has lazarette storage, two 30 amp shore power plugs with master breaker under port molded step
- Stainless steel hand rails and rub rails
- Cockpit hardtop w/integrated lighting
- Hot/Cold Shower
- Transom mount for outboard (outboard not included)
- Fold out cockpit table mounted to transom
- Port and Starboard boarding gates
- Oversize sturdy integrated swim platform w/transom door
- Black-out covers for all windows and aft door.
- 2015 West Marine hard bottom dinghy
- 6/2016 Full hull and topside compound and wax with 3M products





Swim Platform



Fwd Cockpit



Bow Pulpit



Anchor



Radar & Search light



LPG tank storage port sidedeck



Photo 17

Shore Power hubs



Wheelhouse



Wheelhouse view from cockpit



Wheelhouse settee & table



Helm



Galley view from Wheelhouse



Galley looking aft



Galley



Master Stateroom looking fwd

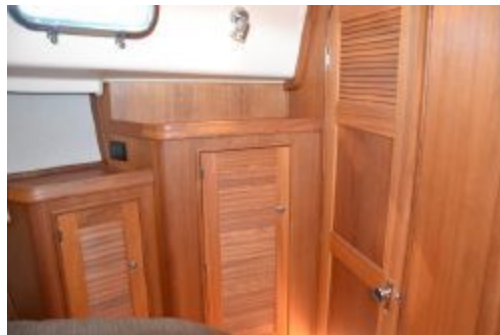
Looking aft from galley



Master Stateroom



Master Hanging lockers



Master storage lockers & door to head



Sink



Toilet



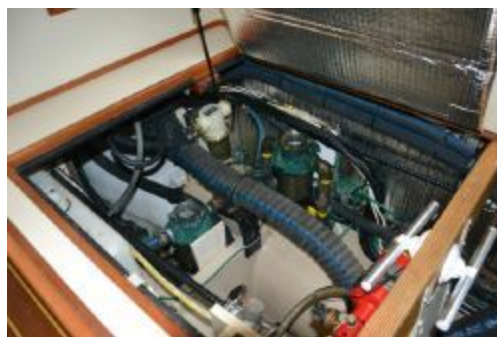
Shower Stall



Nav/Chart Table



Guest Quarters looking aft



Engine Compartment



Engine Compartment



Yanmar engine



Yanmar Engine



Water Manifold



Aft A/C compressor



Electrical panel



Water Tank Monitor



Bilge/High Water Alarm & Autopilot Remote



ST 60 Depth & Speed



Shore/Gen selector and start panel



120v AC Breaker panel



12v DC Breaker panel



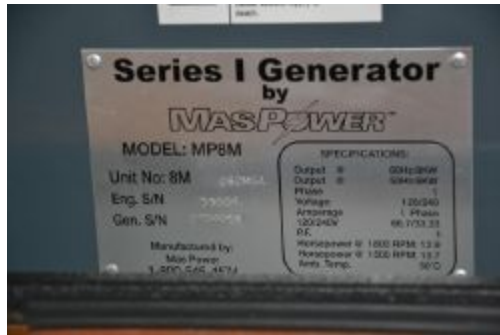
Generator Hour meter



Two independent refrigeration units



Generator



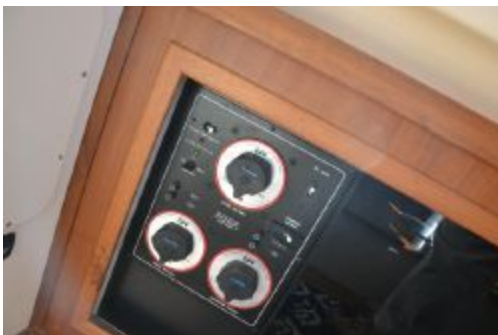
Gen plaques



Gen & Battery Boxes



Looking down on Gen from Wheelhouse





Swim Platform



Fwd Cockpit



Bow Pulpit



Anchor



Radar & Search light



LPG tank storage port sidedeck



Shore Power hubs



Photo 17



Wheelhouse



Wheelhouse view from cockpit



Wheelhouse settee & table



Helm



Galley view from Wheelhouse



Galley looking aft



Galley



Looking aft from galley



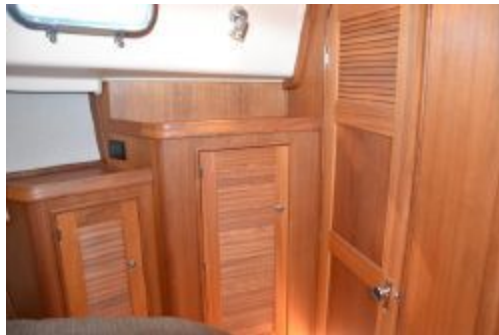
Master Stateroom looking fwd



Master Stateroom



Master Hanging lockers



Master storage lockers & door to head



Sink



Toilet



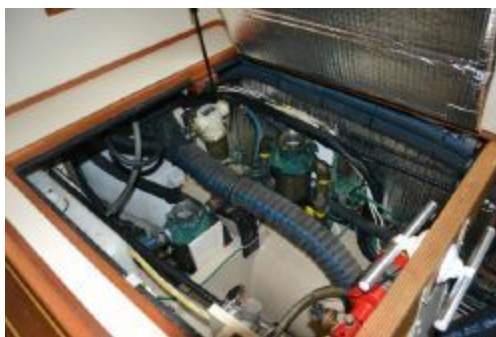
Shower Stall



Nav/Chart Table



Guest Quarters looking aft



Engine Compartment



Engine Compartment



Yanmar engine



Yanmar Engine



Water Manifold



Aft A/C compressor



Electrical panel



Water Tank Monitor



Bilge/High Water Alarm & Autopilot Remote



ST 60 Depth & Speed



Shore/Gen selector and start panel



120v AC Breaker panel



12v DC Breaker panel



Generator Hour meter



Two independent refrigeration units



Generator



Gen plaques



Gen & Battery Boxes



Looking down on Gen from Wheelhouse

