

MOJO



55' (16.92m) SCHWARTZ MARINE WISCONSIN

LOA: 55' 6" (16.92m)
Beam: 17' 0" (5.18m)
Min Draft:
Max Draft: Max 6' 4" (1.93m)
Speed:

Year: Mfg-1983
Model-1983
Builder: SCHWARTZ MARINE WISCONSIN
Type: Trawler
Price: approx. (\$0 2563)
\$359,000 USD
Location: Rhode Island, United States

Additional Specifications For MOJO:


LOA:	55' 6" (16.92m)	Year:	Mfg-1983 Model-1983
Beam:	17' 0" (5.18m)	Builder:	SCHWARTZ MARINE WISCONSIN
Min Draft:		Model:	SEATON 53
Max Draft:	6' 4" (1.93m)	Type:	Trawler
Hull Material:	Steel	Top:	
Hull Config:		Speed:	
Hull Designer:		Engines:	195 HP, Single, 1983, Inboard, Diesel, Cummins 4600hrs
Deck Material:	Steel	Staterooms:	3
Tonnage:		Sleeps:	
Range:		Heads:	
Int Designer:		Crew	
Ext Designer:		Quarters:	
Fuel Capacity:	3,000 g (11,356 l)	Crew Berths:	
Water Capacity:	700 g (2,650 l)	Captain Cabin:	No
Holding Tank:	70 g (265 l)	Classifications:	
Flag:	United States	MCA:	No
Location:	Newport, Rhode Island United States	ISM:	No
Price:	approx. (\$0 2563) \$359,000 USD		

Remarks

MOJO ex-SLUGGO is a ruggedly built little ship. Ideally suited for long range economical passages, she is capable, safe and comfortable for offshore as well as coastal cruising. **MOJO** has just completed a comprehensive two year rebuild and gleams in virtually better than new condition thanks to her highly experienced and knowledgeable owners. Every interior and exterior surface sparkles with fresh Awlgrip, enamel, and varnish. The bottom was blasted to bare metal and protected with six coats of epoxy. All new wiring, plumbing, interior upholstery, lighting and appliances. Five new stainless steel HOOD deck hatches, new swim platform, all new canvas and rigging. Her 3000 gallon fuel tanks were opened, steam cleaned and replaced with fresh diesel. She is equipped with booms for paravanes and flopper stoppers for at anchor stabilization, but has NAIAD active fin stabilizers installed by Hinckley in Southwest Harbor at a cost of \$100,000. **MOJO** is no marina queen. Her exceedingly strong steel hull will be a great comfort if ever grounded on a coral reef or confronted by stray logs or ice. Yet after her rebuild, modern coating systems will ensure that her maintenance expense is on a par with a fiberglass boat. **MOJO** 's low center of gravity and deep draft make her much more seakindly with a more comfortable ride than the popular production trawlers. With her commercial brute of a Cummins diesel, far horizons will beckon. An inspection will not disappoint the most discerning yachtsman.

Accommodations

Sleeps seven in three staterooms with one in wheelhouse watch berth. Bright and airy Herreshoff style interior with white bulkheads and varnished teak trim. Solid teak and holly cabin soles throughout. All freshly refinished. Even the insides of every locker and drawer has a flawless finish. The joinery is of a quality not seen on production yachts with all new upholstery, lighting and plumbing fixtures.

Proud Member of  YATCO

Seaton Yachts
Newport Shipyard
One Washington Street
Newport, 02840

MOJO

MASTER STATEROOM

While most trawler yachts this size have no such thing as real privacy since their staterooms are forward of the engine room, the owners of **MOJO** can enjoy a generous private ensuite stateroom aft with private access from the saloon. The stateroom has ample storage for a liveaboard couple, queen size berth, comfortable settee for lounging and an ensuite head with a 2012 Vacuflush toilet and tiled shower compartment.

GUEST STATEROOMS

Two guest staterooms are forward port and starboard each with twin berths and generous storage. The port stateroom has a fold down desk for use as an office and includes a hidden ship's safe. These cabins share a head with a 2012 Vacuflush toilet and huge tiled shower. In the passageway is a dedicated laundry area with a 2012 washer/dryer.

WHEELHOUSE

MOJO features a big-ship raised wheelhouse protected by a Portuguese bridge with access port and starboard by watertight doors. There is a centerline STIDD helm seat and bench seat that can serve as a watch berth.

SALOON

The amidships saloon is light and airy with large windows affording views while seated. The entire ship's complement can comfortably dine at the curved dinette aft to port. There is plenty of room for additional comfortable seating. Stairs lead below to the owner's stateroom and aft to the boatdeck. Secondary access to the engine room by ladder within full height compartment.

GALLEY

The galley has been totally rebuilt. 2012 FRIGIDAIRE stainless steel refrigerator/freezer, 2012 BERGHOFF Profile Cooktop with 2012 BROAN stainless steel exhaust hood, 2012 GE stainless steel microwave/convection oven and 2012 stainless steel double sinks.

Deck Equipment

- IDEAL Horizontal windlass completely rebuilt, rechromed and Awlgriped 2012
- Two 75 lbs. CQR anchors on anchor rollers with 250' 5/8" chain
- SIMPSON tender davits each with 12 VDC winches. Total capacity 350 KG or 770 lbs
- Emergency tiller

Electrical System

- 2012 Complete rewiring of the vessel with new electrical panels
- 2012 MAGNUM 3400 Inverter
- 2012 CHARLES 30 Amp charger
- 2000 KOHLER 10 kW genset with dry exhaust & keel cooling
- 2012 Six 8D House batteries
- 2012 Two Group starting batteries
- 2012 Eight Group 32 Batteries for 24 VDC bow and stern thrusters

Proud Member of  YATCO

- 2012 50 AMP & 30 AMP shore power cords

Electronics and Navigational Equipment

- 2012 SIMRAD Autopilot
- 2012 GARMIN 4212 color chartplotter
- 2012 Garmin 4' open array Radar
- WAGNER Sauer 10" Compass
- DYTEK Sea Temperature
- ICOM VHF
- STANDARD Horizon hailer/fog signal
- Air horns with compressor
- Carlisle & Finch searchlight
- Jog stick

Engine /Mechanical Equipment

- CUMMINS 855 N May 2012 all new injectors installed by Sun Power Diesel & Marine of Dania, Florida and compression confirmed at or nearly for all cylinders at build specs. Effortly cruises at 8.5 kts @1,300 rpm burning 6 gal/hr.
- 2012 new oil cooler, injectors & BOSCH 200 Amp alternator
- Dry stack exhaust for engine and genset
- Internal keel cooling for engine an genset with out vulnerable external heat exchanger
- TWIN DISC 509 gearbox with 3:1 reduction gear
- 38" x 38" 4 blade bronze prop
- SPURS prop shaft line cutters
- 2012 new 2-1/2" stainless steel shaft
- 2012 new Cutlass bearings
- 2012 Dripless shaft seal
- 2012 RACOR dual 1000 fuel filters
- 2012 All new fuel lines
- 2012 fuel tanks steam cleaned & filled with fresh fuel
- 2012 Rebuilt WAGNER hydraulic steering in wheelhouse and flybridge
- PANISH Controls
- 2012 SIDEPOWER 24 VDC 25 HP Bow and 17 HP stern thrusters
- 2008 NAIAD stabilizers installed by Hinckley
- 5 zone AQUA-AIR air condioning
- 2012 stainless steel tool chest in engine room
- 2012 FIREBOY engine room automatic fire system
- 2012 SHURFLOW fresh water system with filtration
- 2012 RARITAN 20 gal domestic water heater

Construction

- Welded steel hull and deck.
- 5/16" plating below the chine and 1/4" plating above
- Decks are 3/16" plate. Welded steel longitudinal and tranverse stringers
- (4) welded steel watertight bulkheads.
- Superstructure is welded steel
- Aluminum parvane booms and stacks
- 2011 Bottom blasted to bare metal with six coats of epoxy applied.
- 2012 PETTIT Vivid light green antifouling paint
- 2012 Snow White AWLGRIP topsides, decks & superstructure
- 2012 Moon Dust AWLGRIP nonskid
- 2012 Castle Tan AWLGRIP Dorade vents & grabrails
- August 2012 varnished teak caprails & trim


Proud Member of  YATCO

Seaton Yachts
Newport Shipyard
One Washington Street
Newport, 02840

MOJO

Disclaimer

Particulars as listed are believed to be correct but not guaranteed. It is the Buyer's responsibility to verify, through inspection and survey, the accuracy of this information.

Proud Member of  YATCO

**Seaton Yachts
Newport Shipyard
One Washington Street
Newport, 02840**

MOJO


Page 5 of 20

SALOON VIEW AFT



GALLEY



Proud Member of 

Seaton Yachts
Newport Shipyard
One Washington Street
Newport, 02840


MOJO

GALLEY



WHEELHOUSE STIDD SEAT



Proud Member of  YATCO

Seaton Yachts
Newport Shipyard
One Washington Street
Newport, 02840

MOJO


Page 7 of 20

WHEELHOUSE



WHEELHOUSE CHART TABLE



Proud Member of 

Seaton Yachts
Newport Shipyard
One Washington Street
Newport, 02840

MOJO


Page 8 of 20

MASTER STATEROOM QUEEN BERTH



MASTER STATEROOM SETTEE



Proud Member of 

Seaton Yachts
Newport Shipyard
One Washington Street
Newport, 02840


MOJO

MASTER HEAD



STARBOARD GUEST STATEROOM



Proud Member of 

Seaton Yachts
Newport Shipyard
One Washington Street
Newport, 02840

MOJO

Page 10 of 20

GUEST HEAD STALL SHOWER



GUEST HEAD




PORT GUEST STATEROOM



STAIRS TO WHEELHOUSE



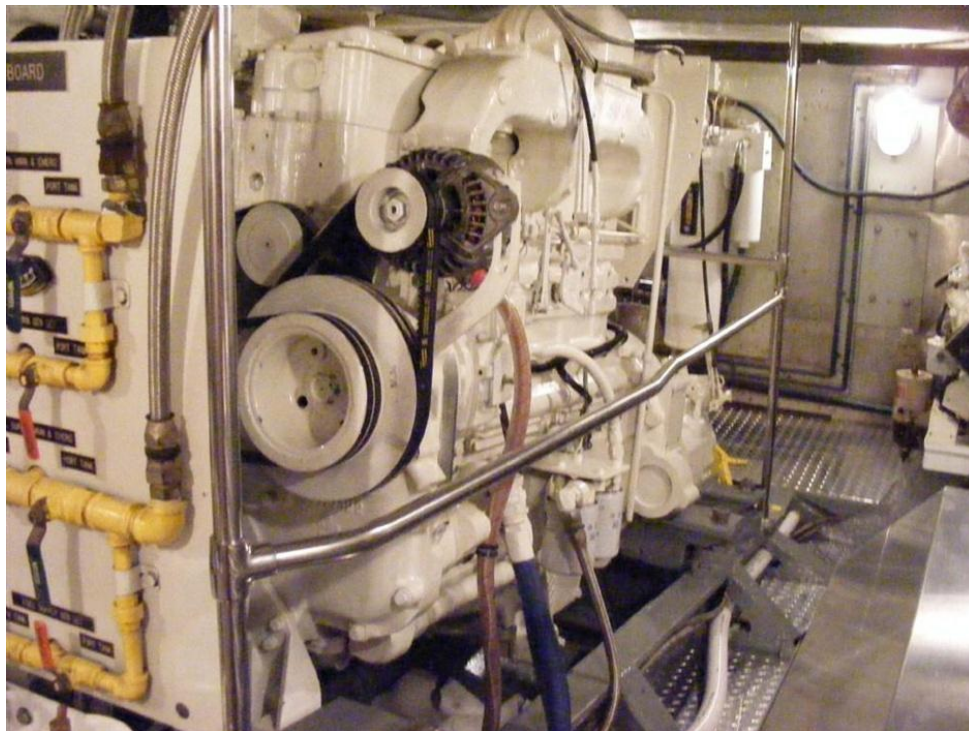
Proud Member of  YATCO

Seaton Yachts
Newport Shipyard
One Washington Street
Newport, 02840

MOJO


Page 12 of 20

CUMMINS N SERIES



TWIN DISC GEARBOX



Proud Member of  YATCO

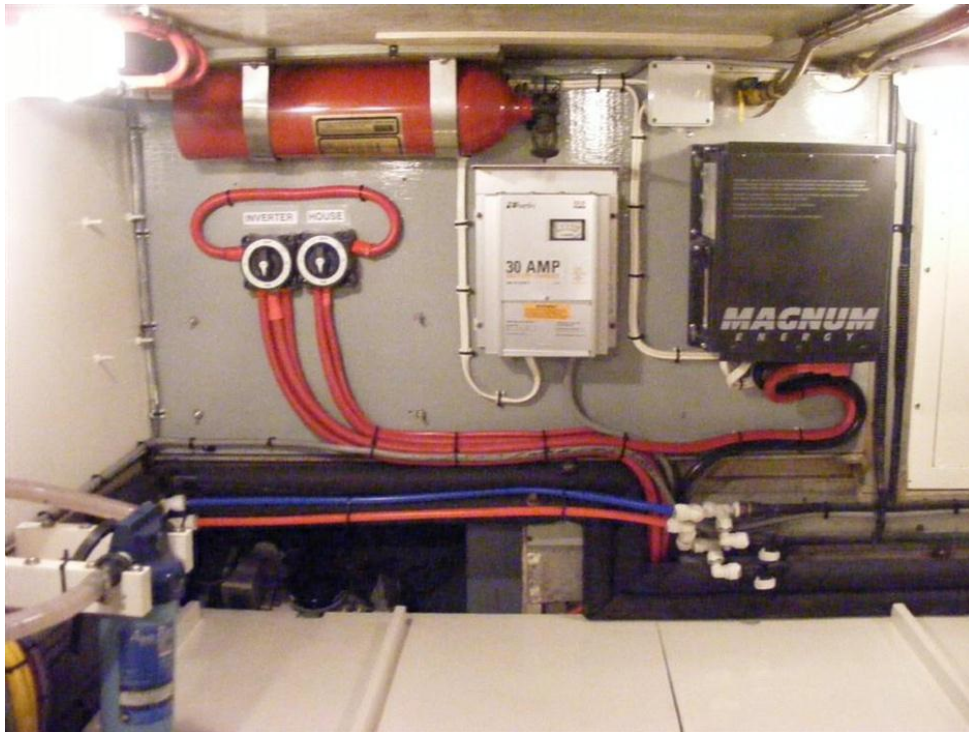
Seaton Yachts
Newport Shipyard
One Washington Street
Newport, 02840

MOJO

ENGINE ROOM



ENGINE ROOM




PORTUGUESE BRIDGE



FOREDECK FROM FLYBRIDGE



Proud Member of  YATCO

Seaton Yachts
Newport Shipyard
One Washington Street
Newport, 02840


MOJO

FOREDECK



AFT DECK



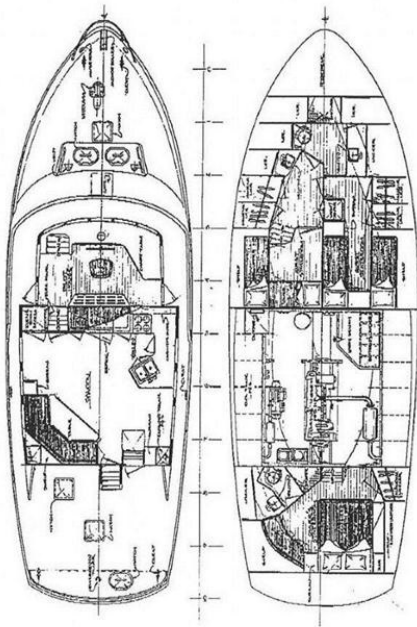
Proud Member of 

Seaton Yachts
Newport Shipyard
One Washington Street
Newport, 02840

MOJO

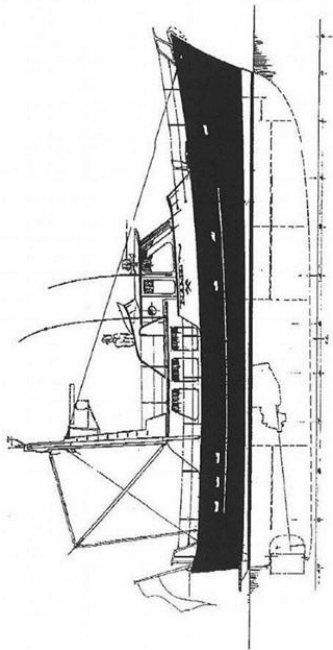
GENERAL ARRANGEMENT

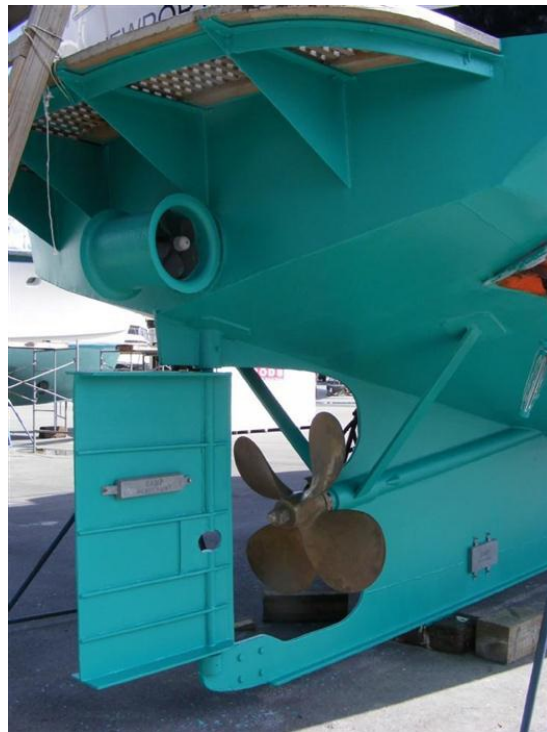
Layout




PROFILE

ELEVATION







Proud Member of 

Seaton Yachts
Newport Shipyard
One Washington Street
Newport, 02840

MOJO