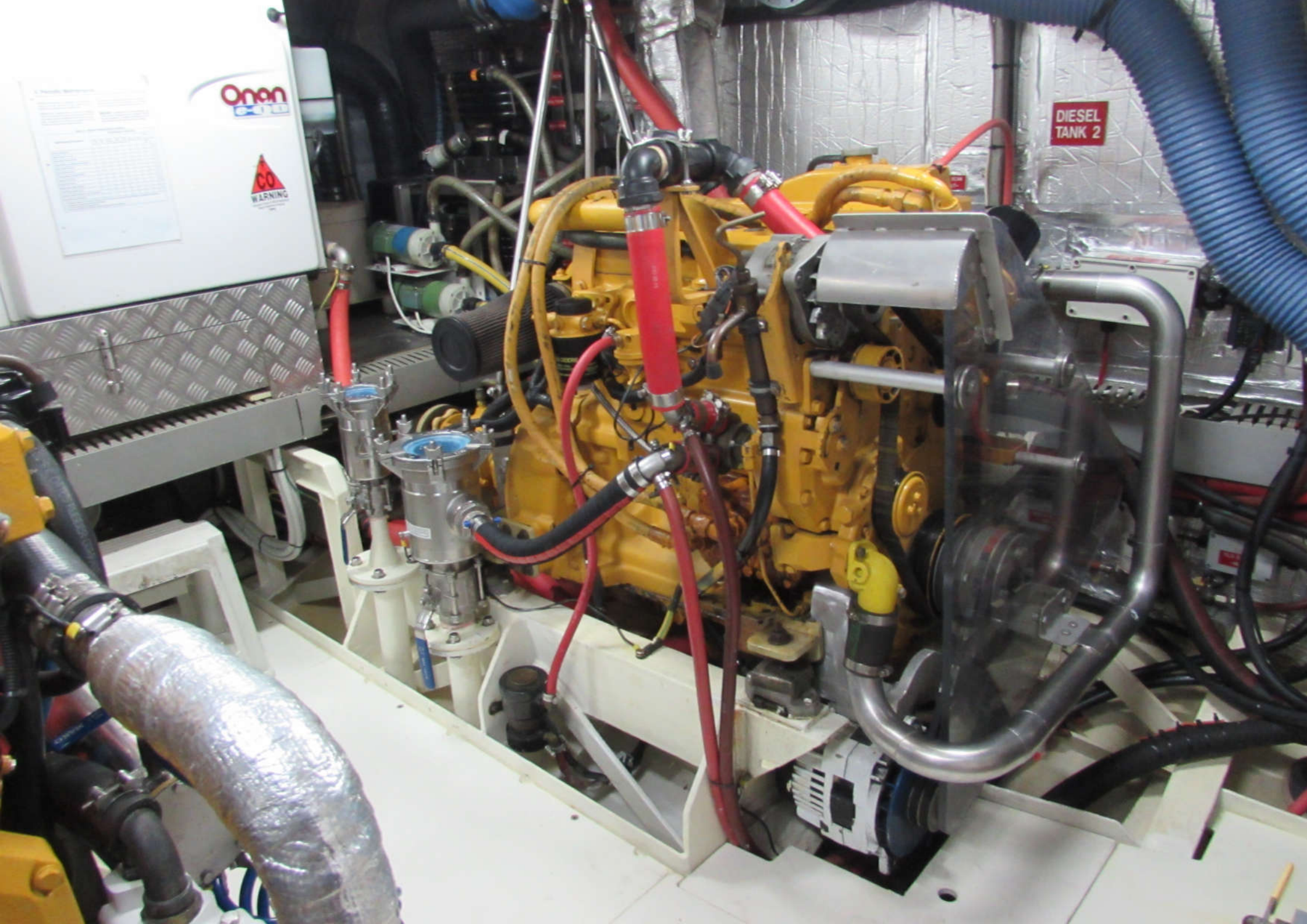


BATTERY
CHARGER - OR
ALTERNATOR - OR
SUPPLY TO
ENGINE MOTORS.
FOR USE
ON GENERATOR OR
SHORE POWER

Onan
POWER





Onan

CO
WARNING

DIESEL
TANK 2

V10

24 VDC BATTERY
CHARGER - OR
CONTINUOUS POWER
SUPPLY TO
STEERING MOTORS.
FOR USE
RUN GENERATOR OR
SHORE POWER

MASS 24/160-C

MASTERVOLT

24 VDC BATTERY CHARGER FUSE
100 AMP

HyDrive
LOCK VALVE
LIFT CYLINDER

34.2°C
23847

WATER CONNECTIONS
MADE CORRECTLY
AND
ALTERNATION TO WATER

24 VDC STEERING MOTORS
80A CIR BREAKER



1700L/850L

1500L/750L

1300L/650L

1100L/550L

900L/450L

700L/350L

500L/250L

M1

M2

650268

WARNING

Operation, maintenance, and service present risk of property damage, personal injury, death, or exposure to substances identified by state or federal agencies as causing cancer or reproductive toxicity.

Always start and operate this engine in a well ventilated area. If operating in an enclosed area, vent the exhaust to the outside. Do not modify or tamper with the exhaust system, or the emission control system.

See Operator's or Service Manual for important safety and health warnings and instructions.

9098-0074-02(D)

Onan

	MDKBL	MDKBL	MDKBL	MDKBL
Fuel filter				
Oil filter				
Sea Water Pump				
Impeller	149-2106			
Impeller/S-Ring Kit	185-5835			
Thermostat				
Thermostat gasket	132-0379			
Van Delft (Water Pump)	132-0379			
Zinc	185-6005			
	185-6004			
	185-6934			
	130-4434			

CAPACITIES

	MDKBL/MDKBL	MDKBL/MDKBL	MDKBL/MDKBL
Oil with filter	4.0 qt. (4.2 qt.)		
Engine coolant (50/50)	4.0 qt. (4.2 qt.)		
START			
1. Fuel and Exhaust			
2. and pressurize.			
3. Pump and hold START			
4. Indicator light flashes during glow and crank			
5. Release START when green run light			
STOP			
1. Push STOP			

OPERATION

1. Push STOP

2. Push STOP

3. Push STOP

4. Push STOP

5. Push STOP

Zinc

CAPACITIES	MDKBM/MDKBL	MDKBM/MDKBN
Oil with filter	4.0 ltr (4.2 qt.)	4.3 ltr (4.5 qt.)
Engine coolant (50/50)	4.0 ltr (4.2 qt.)	5.0 ltr (5.3 qt.)

OPERATION

START

1. Read and follow Operator's Manual instructions and precautions.
2. Push and hold START.
3. Indicator light flashes during glow and crank.
4. Release START when genset green run light is on.

STOP

1. Touch STOP

SERVICE CODES

Preheat/Crank	Rapid
High Coolant Temp	1
Low Oil Pressure	2
See Manual	3
Excessive Cranking	4
No Raw Water Flow	7



Read Installation and Operator's Manuals for important Installation, Operation, Safety, and Health information.

98-8355

Onan

IMPORTANT ENGINE INFORMATION
CUMMINS POWER GENERATION
1400 73rd Ave. NE
Minneapolis, MN 55432
Made in U.S.A.

Model No: MDKBM-5735913
S/N: 6050806780

Spec: B

AC Volts: 120/240V	KVA: 9.5	PH: 1
Amps: 39.6	PT: 1	WM: 9.5
Fuel: Diesel	HZ: 50HZ	RPM: 1500
Options: A347-2 E200-2 P142-2	Bat: 12V	Wipe Diagram: 0630-0694
6078-2 E086-2 L047-2 R104-2		
B488-2 SPEC B 5-5HDKBM		

INSULATION: NEMA CLASS H AMBIENT 40C

REFER TO OPERATOR'S MANUAL FOR MAINTENANCE
SPECIFICATIONS AND ADJUSTMENTS
1335 cc

99-2485 G



90-2486-08

Fire Extinguisher
Port

Break
Thru
Here

WARNING

In case of fire, do not open soundshield.
Avoid serious injury or death from fire.
Shut down engines, generator sets and blowers.
Immediately discharge entire contents of gaseous
portable fire extinguisher through this port.

98-778



DIESEL

1800L

1700L

1600L

1500L

1400L

1300L

1200L

1100L

1000L

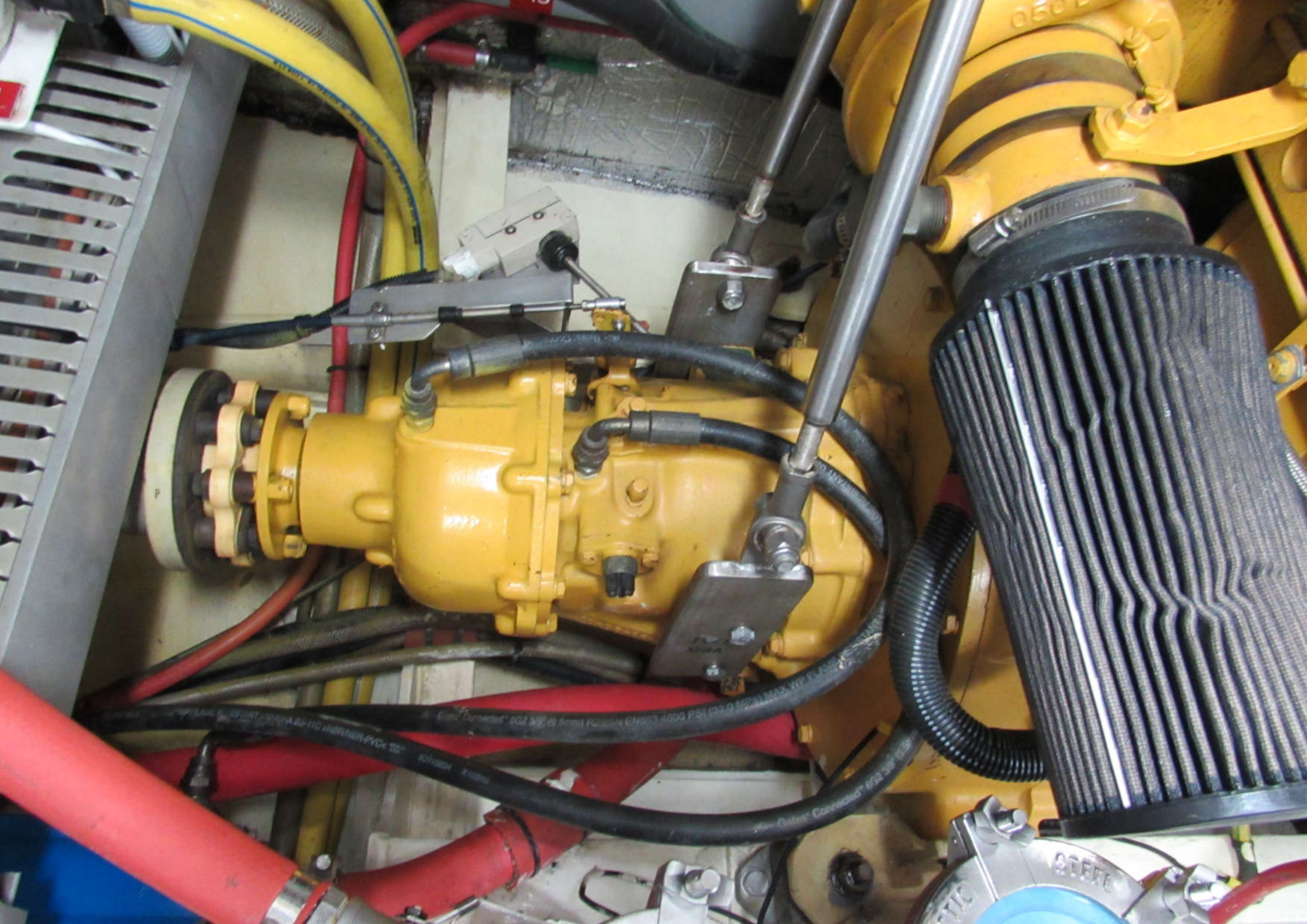
900L

BUNK PUMP

SALCO

GE
-WR

-E



R508726 J
R502058 J
8-21

JOHN DEERE NUMBER C00052000

4045FM50 157023

1100	1200	1400	1600	1800	2000	2200	2400	2600	2800	3000	3200	3400	3600	3800	4000	4200	4400	4600	4800	5000
2700	2800	2900	3000	3100	3200	3300	3400	3500	3600	3700	3800	3900	4000	4100	4200	4300	4400	4500	4600	4700
4800	4900	5000	5100	5200	5300	5400	5500	5600	5700	5800	5900	6000	6100	6200	6300	6400	6500	6600	6700	6800
6900	7000	7100	7200	7300	7400	7500	7600	7700	7800	7900	8000	8100	8200	8300	8400	8500	8600	8700	8800	8900
9000	9100	9200	9300	9400	9500	9600	9700	9800	9900	10000	10100	10200	10300	10400	10500	10600	10700	10800	10900	11000

Order No. 0000135531

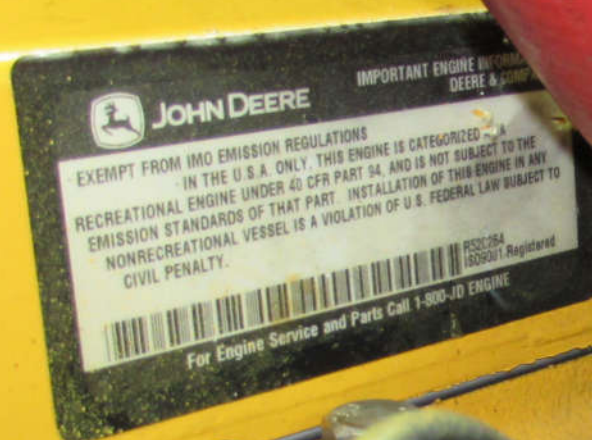
OPTION C003

JOHN DEERE

POWERTECH

4.5 liter





IMPORTANT ENGINE INFORMATION
JOHN DEERE & COMPANY

JOHN DEERE

EXEMPT FROM IMO EMISSION REGULATIONS
IN THE U.S.A. ONLY. THIS ENGINE IS CATEGORIZED AS A
RECREATIONAL ENGINE UNDER 40 CFR PART 94, AND IS NOT SUBJECT TO THE
EMISSION STANDARDS OF THAT PART. INSTALLATION OF THIS ENGINE IN ANY
NONRECREATIONAL VESSEL IS A VIOLATION OF U.S. FEDERAL LAW SUBJECT TO
CIVIL PENALTY.



For Engine Service and Parts Call 1-800-JD ENGINE



BK/GY-PUMP

BLACK-TANK

SUCTION-OUTLET

GREY-TANK

SUPERBALL

WATVAUHOE

WATVAUHOE

PORT END-FILTER

DIESEL TANKS & VALVES

DURING OPERATION DIESEL TANK BOTTOM VALVES REMAIN CLOSED EXCEPT FOR VALVES V7, V8 & V9

ALL TOP VALVES REMAIN CLOSED EXCEPT FOR THE DIESEL ENGINE RETURN LINE VALVE WHICH FEEDS INTO TANK 1 AND THIS VALVE IS CABLE TIED OPEN

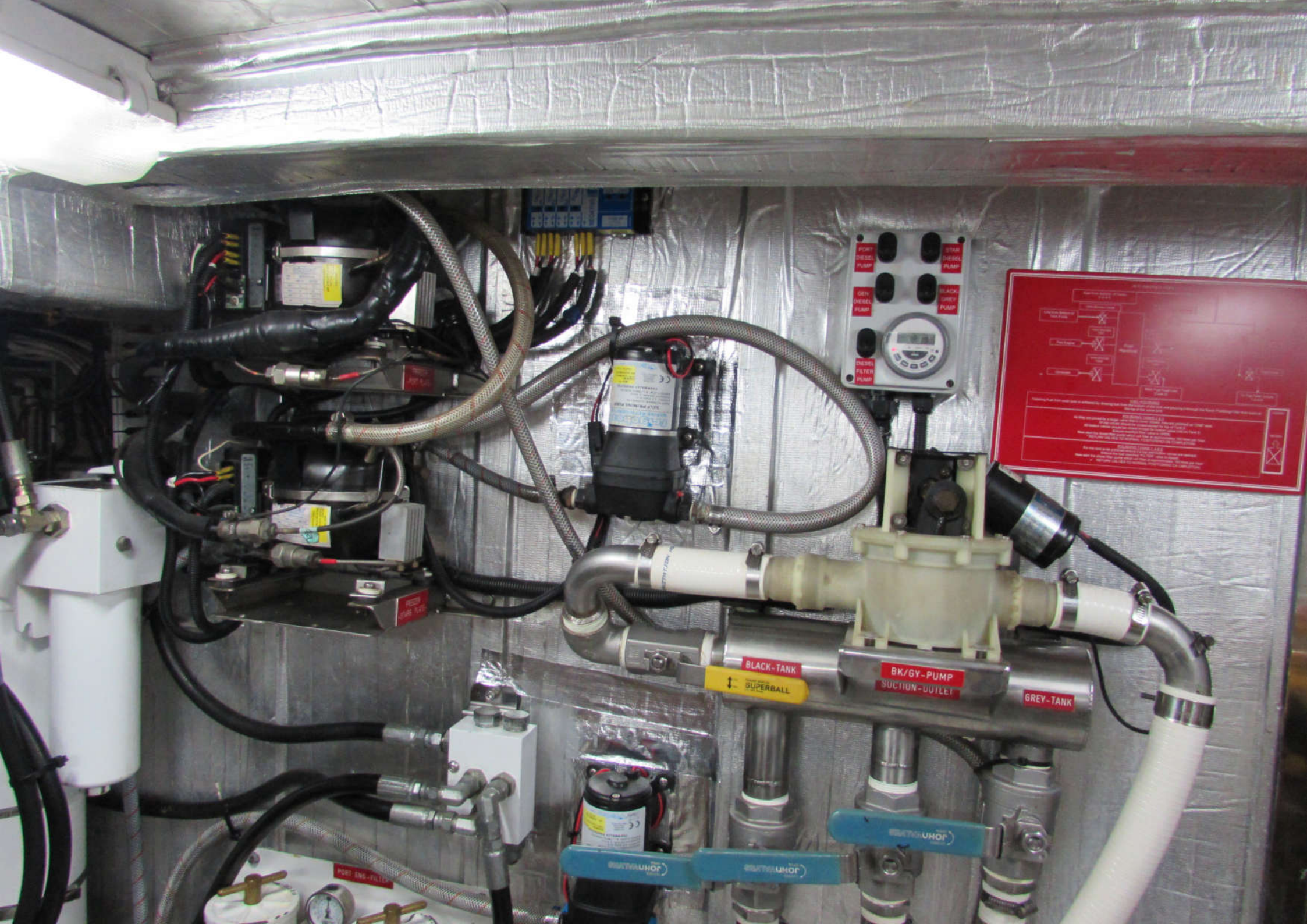
TANKS 1, 2 & 3 ARE JOINED BY A BOTTOM VALVE (V7) THAT ALWAYS REMAINS "UP" THE BOTTOM VALVE ON TANK 4 STAYS IN AN "UP" POSITIONALLY OPEN. THIS TANK VALVE IS 1" & 1/2" ALL TANKS HAVE FUEL SAMPLES IN TANKS 1, 2, 3 & 4

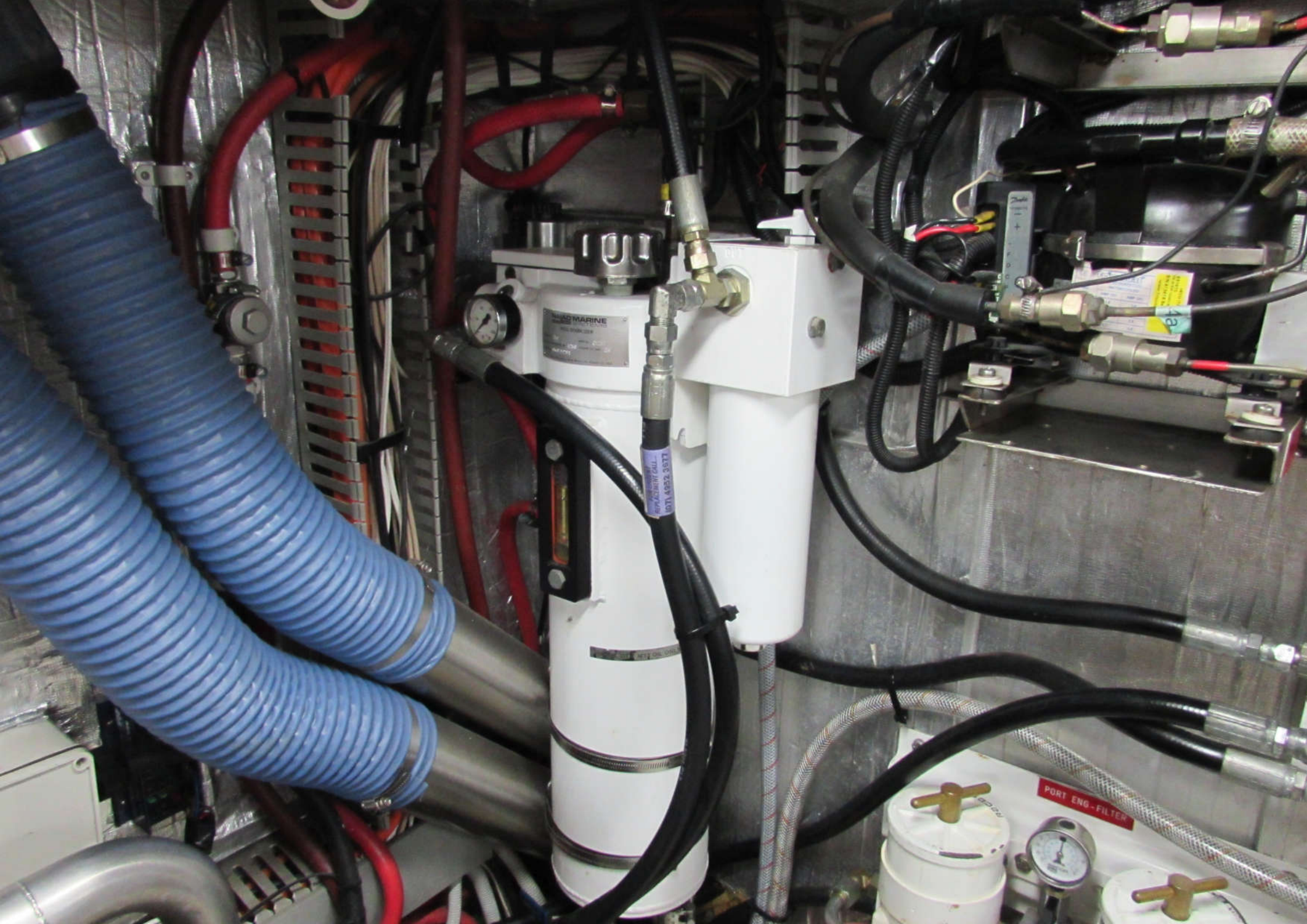
TANKS 1 & 2 ARE EMPTY AS RECEIVED. FUEL DELIVERY LOWERS THE STANDARD TANK (1) WHICH HAVE ONE LITRE MORE FUEL THAN TANK 1

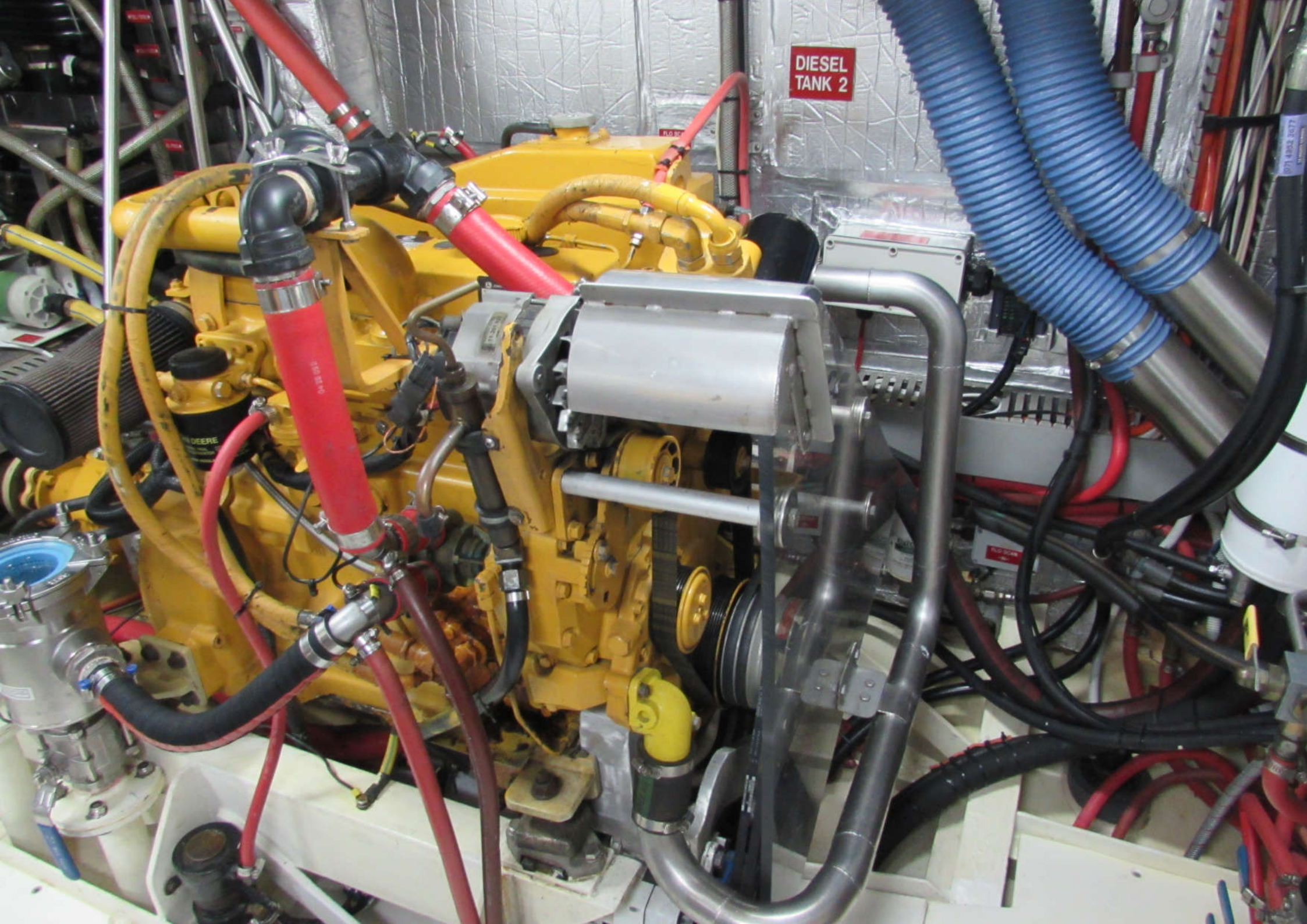
STARBOARD END-FILTER

FUEL POLISH-FILTER

V7 DIESEL INK







DIESEL
TANK 2



34.2
240.48

SAFETY
STOP

Onan
Generator
Model
Serial
CE

SAFETY
STOP

SALOOM
DICES
WASH
FREEZER

17-18



V22 DIESEL
TANK 5

Onan
Marine Genset

GENERATOR MUST STOP AUTOMATICALLY
WITH SHOCK POWER OR EXHAUST
GENERATOR CIRCUIT BREAKERS ARE
"OFF"
WHILE EXHAUST ENGINE GENERATOR
CIRCUIT BREAKERS ARE "ON" AND
BLACKOUT "ON"

4. Periodic Maintenance

Item	Frequency	Notes
Oil Change	Every 100 hours or 1 year	Use only recommended oil
Water Change	Every 100 hours or 1 year	Use only recommended water
Filter Change	Every 100 hours or 1 year	Use only recommended filter
Belt Tension	Every 100 hours or 1 year	Check and adjust as needed
Voltage Regulation	Every 100 hours or 1 year	Check and adjust as needed
Exhaust System	Every 100 hours or 1 year	Check for leaks and damage
Generator Output	Every 100 hours or 1 year	Check and adjust as needed
Control Panel	Every 100 hours or 1 year	Check for damage and loose connections
Emergency Stop	Every 100 hours or 1 year	Check for proper operation
Generator Housing	Every 100 hours or 1 year	Check for damage and leaks
Generator Mounting	Every 100 hours or 1 year	Check for proper installation
Generator Grounding	Every 100 hours or 1 year	Check for proper grounding
Generator Labeling	Every 100 hours or 1 year	Check for proper labeling
Generator Documentation	Every 100 hours or 1 year	Check for proper documentation

Onan
e-CD

CO
WARNING