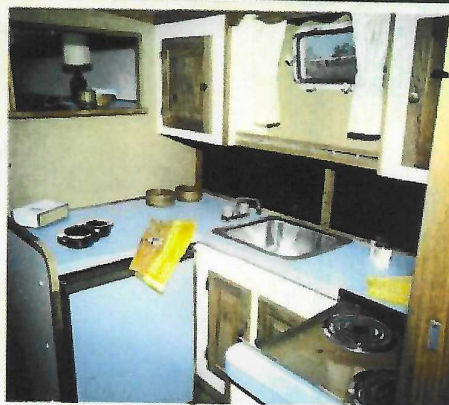
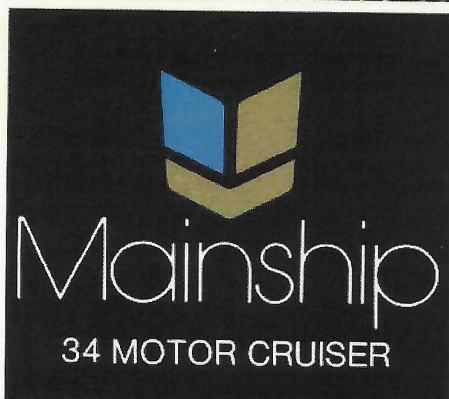
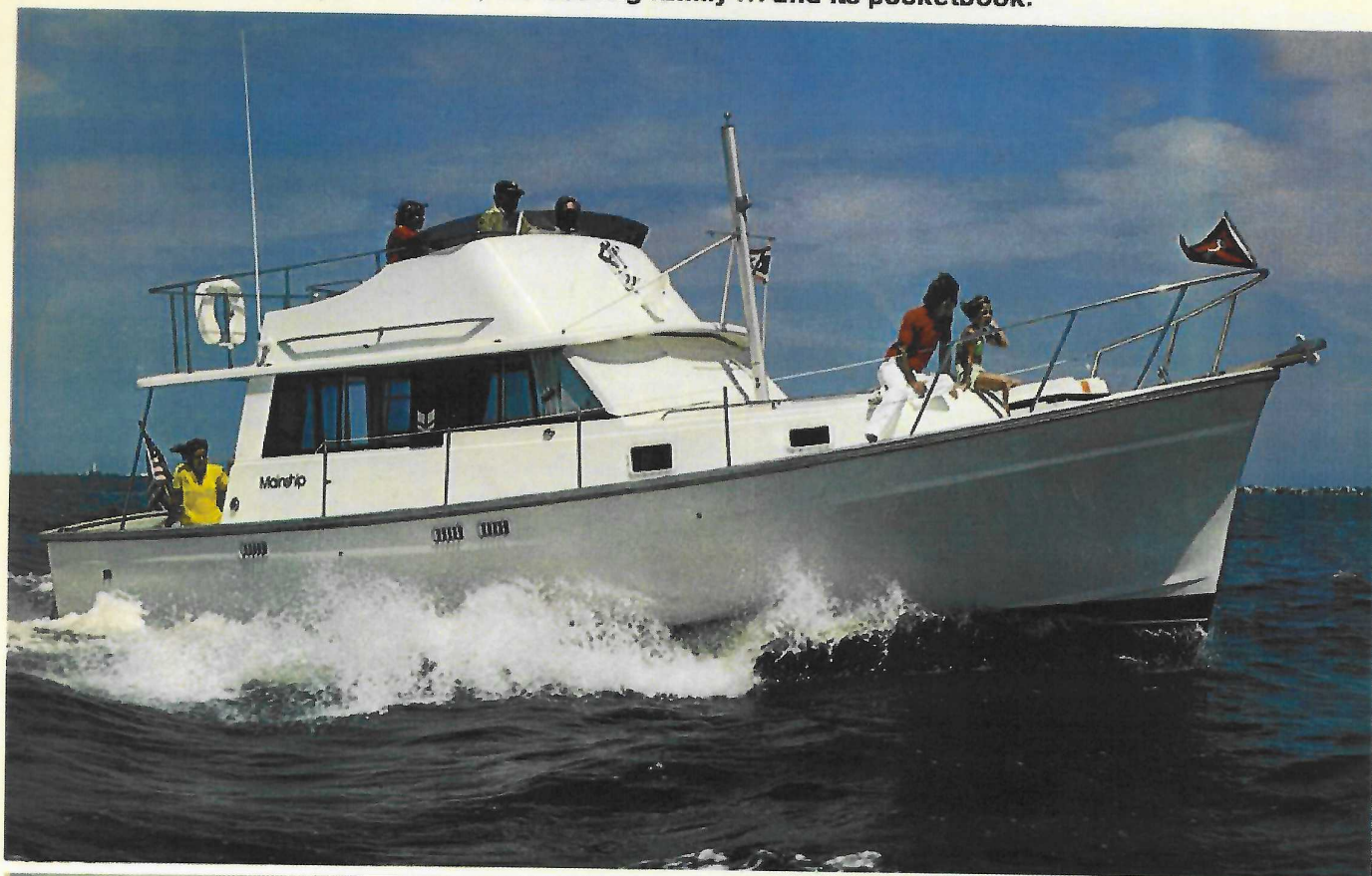


Built by people who respect the sea, the boating family ... and its pocketbook.



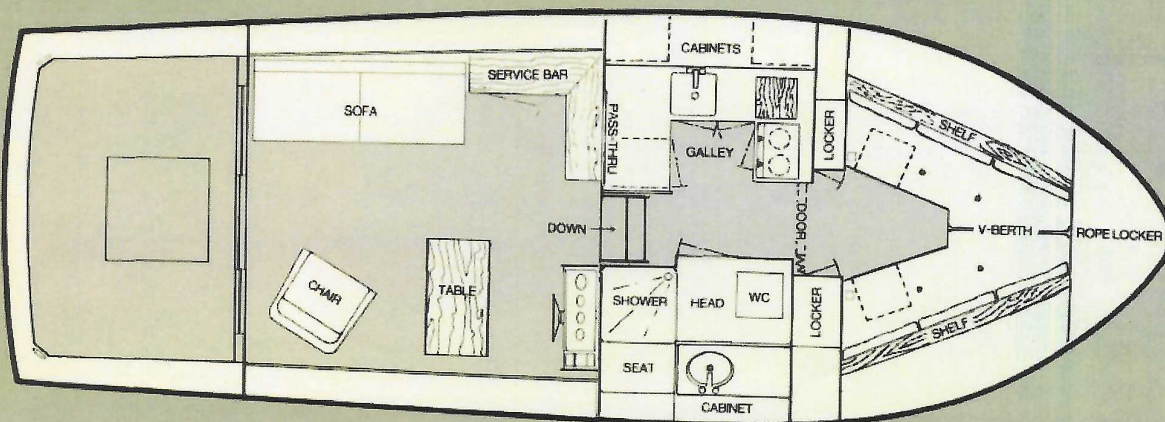
Specifications

Length LOA - 34'0" - 10.8m
 Beam - 11'11" - 3.4m
 Draft - 34" - 85cm
 Fuel Capacity - 220 U.S. Gal. - 850L
 Water Capacity - 50 U.S. Gal. - 190L
 Head Room - 6'3" - 1.91m
 Sleeping Capacity - 4 or 6 optional
 Approx. Weight - 14,000 lbs.
 Cockpit - 8' long x 10' wide
 Cabin - 10' long x 9' wide
 Clearance Height - 13'6"
 Power - Single Diesel
 Fiberglass Construction

Subject to change without notice.
 Subject to revision.

Standard Equipment

- 3 KW Diesel Generator & Muffler
- S/S Bow Safety Rail
- Fire Extinguisher - 2, USCG Approved
- Valves on Underwater Thru-Hulls
- Electric Bilge Pump w/ Automatic Sw.
- Tempered Safety Glass - All Windows
- Non-Skid Surfacing on Decks
- Anchor Line & Chocks
- Navigation Lights
- Circuit Breakers - 115 Volt
- 12 Volt Battery
- Horn - Bell - Compass
- Life Vests - 6 USCG Approved
- 1 Type IV - Personal Flotation Device - Throwable
- Dual Engine Controls & Instruments
- Dual Steering Stations - Hydraulic
- Engine Room Sound Proofing
- Engine Alarm System
- Fuel Filters
- Electric Fuel Gauge
- Bronze Shaft and Rudder
- Anti-Fouling Bottom Paint
- Windshield Wiper
- S/S Flybridge Hand Rails
- Venturi Windshield on Flybridge
- Signal Mast and Spreader
- S/S Bridge Ladder
- Bridge Seating
- 2 Folding Deck Chairs
- Window Screens
- Interior 12 Volt Lights
- 50' 115 Volt 30 Amp Shore Line
- Certified Marine Sanitation System
- Forward Hatch w/ Adjustor
- Sink, Vanity & Mirror in Head
- Shower
- 115 Volt Water Heater with Heat Exchanger
- Hot & Cold Pressure Water System
- Hanging Locker and Drawers
- Curtains and Drapes
- 115 Volt 2 Burner Range & Oven
- S/S Galley Sink
- Electric Refrigerator
- 4" Fabric Covered Cushions
- Salon Sofa Converts to Double Berth
- Upholstered Swivel Chair
- Carpeting Throughout
- Rope Deck Pipe
- S/S Mooring Bit, Quarter Cleats and Spring Line Cleats
- Rope Locker
- Sliding Aluminum Door in Deckhouse
- 4 Opening Port Lights
- Table Converts to Cocktail Height



34 MOTOR CRUISER

Mainship 34 speaks so warmly of the past and so surely of the future. She recreates a nostalgic visual drama of classic excellence and gives you energy efficiency in the bargain.

A lavish expression of cruiser renaissance, Mainship 34 Motor Cruiser is a smooth-cruising All-American classic. American engineering and construction offers the alternative to the slow, look-alike imports. Designed to meet the unique demands of today's energy considerations, Mainship is powered by Perkins 160 diesel for a good turn of speed and economical, long-range performance.

Low maintenance, fiberglass construction and exceptional sea-keeping qualities match modern technology with every standard of classic excellence. All this, and a standard equipment list to the envy of the competition.

Once
 a classic...
 always a
 classic!


Mainship
 MOTOR CRUISER

Note: Some of the photos contained herein show dealer installed optional equipment & accessories. Due to a continuing program of improvement, Mainship Corporation reserves the right to revise specifications, equipment and color schemes on any of its boats. Consult your Mainship dealer for up-to-date information and prices.

MAINSHIP: A DIVISION OF SILVERTON MARINE CORPORATION • 120 KETTLE CREEK ROAD, TOMS RIVER, NEW JERSEY 08753
 Tel. 201-255-1100